



BTEC level 3 Health and Social Care

Who is this course for?

Whether it's going into a job or progressing into a university course, the broad nature of BTEC Health and Social Care studies at advanced level will not lock you into any particular pathway; it provides the background knowledge for a variety of career choices. Most students will have an interest in working professionally with people; this could be in early years work with children as a primary teacher or children's nurse, it might be in adult health services as a paramedic, midwife, adult nurse or in social care services as a social worker, or possibly in some other career such as operating department practitioner or occupational therapist.

What are the entry criteria?

Most students starting BTEC Level 3 Health and Social Care courses will have at least five GCSE's at grade C or above, including English Language and science.

The Health and Social Care department at Wyke Sixth Form College

The Health and Social Care department has three dedicated teaching rooms in the Ash building. All students receive two textbooks for the duration of the course which they are expected to use productively to complete their assignments.

The Health and Social Care staff have a variety of different specialisms and this determines which units of the course they teach. The staff team is:

- Colin Walden (Head of BTEC level 3 Health and Social Care)
- Michele Tong (Head of BTEC level 2 Health and Social Care)
- Lesley Horsfield
- Lesley Parkinson

Exam Board

Edexcel

Course Details

BTEC Level 3 Health and Social Care is available in three forms:

- BTEC Level 3 Certificate (1 GCE AS Level equivalent)
- BTEC Level 3 Subsidiary Diploma (1 GCE A Level equivalent)
- BTEC Level 3 Diploma (2 GCE A Level equivalent)

BTEC Level 3 Certificate has three units and is delivered in one academic year.

The units are:

- *Developing effective communication in Health and Social Care*
- *Equality, diversity and rights in Health and Social Care*
- *Anatomy and physiology for Health and Social Care*

BTEC Level 3 Subsidiary Diploma has six units and may be delivered over one or two academic years. The units are:

- *Developing effective communication in Health and Social Care*
- *Equality, diversity and rights in Health and Social Care*
- *Health, safety and security in Health and Social Care*
- *Development through the life stages*
- *Anatomy and physiology for Health and Social Care*
- *Physiological disorders*

BTEC Level 3 Diploma has 12 units and is delivered over two academic years.

The 12 units include the six shown above for the Subsidiary Diploma course and:

- **Personal and professional development in Health and Social Care*
- *Sociological perspectives for Health and Social Care*
- *Psychological perspectives for Health and Social Care*
- *Caring for children and young people*
- *Safeguarding adults and promoting independence*
- *Human inheritance for Health and Social Care*

*Personal and professional development in Health and Social Care requires 100 hours of work experience to be completed over the two academic years. This is achieved through two work experience placements.

The method of Assessment is entirely through the completion of tutor set assignments. These are marked and checked internally by course teaching staff and moderated by the exam board.

How the course is delivered

Completing the coursework components of the qualification means we regularly use computer suites as part of the teaching programme. Each lesson is 70 minutes in duration.

BTEC Certificate = four lessons per week

BTEC Subsidiary Diploma over two years = four lessons per week

BTEC Subsidiary Diploma in one year = eight lessons per week

BTEC Diploma = eight lessons per week

Departmental Enrichment

In the first year of the course all Diploma course students complete one week of vocationally relevant work experience. In the second year they complete two week's work experience. All students are strongly advised to enrol onto those enrichment courses offered by the college which are applicable to the subject and to their personal career path. Relevant enrichment courses include:

- 'Emotional intelligence 1: Understanding self and others'
- 'Emotional intelligence 2: Building self-esteem'
- 'Why do people think like that?'
- 'Lives worth living'
- 'Parent and Toddler group'
- 'Lexia - Reading skills development'
- 'Begin your medical career here'

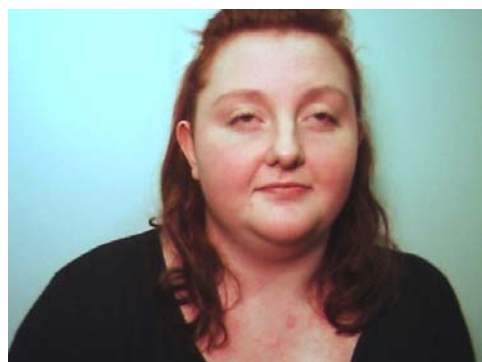
Student successes



Yasmin Stephenson
Kelvin Hall High School
Wyke 2009 – 11
GCE Health and Social Care grade BC dual award
Now at Hull University studying for a degree in Children's nursing



Christabel Ntow
Endeavour High School
Wyke 2009 – 11
GCE Health and Social Care grade B single award
Now at Bradford University studying to be a registered midwife



Kate Simpson
Cottingham High School
Wyke 2009 – 11
GCE Health and Social Care grade BB dual award
Now at Hull University studying for Social Work with professional qualification



Hafeeza Choudhury
Schooling in Leeds
Wyke 2009 – 11
GCE Health and Social Care grade A single award
Now at London University studying for Master of Pharmacy

What does this course lead to?

Former students have progressed from a level 3 qualification in Health and Social Care both to employment and to further study in Higher Education. Recent degree courses taken by former students at university include:

- Adult Nursing
- Mental Health Nursing
- Child Nursing
- Learning Disability Nursing
- Midwifery
- Children's Inter-Professional Studies
- Primary Teaching
- Childhood/Child Studies
- Health Studies
- Social Science Studies
- Social Work
- Sociology
- Care and Education Guidance and Counselling
- Paramedic Science
- Occupational Therapy

What can I do now that would help prepare me for this course?

Do some vocationally relevant work experience if you can. Many students will have had one week of work experience already in year 10 at school. Try to build on this. You might be able to get part time work in a residential care home, or volunteer in a hospice or hospital environment. You might be able to help out at a local nursery, or summer play scheme. Try to use the contacts that your school, youth club or family have got to find something that gives you the opportunity to observe people being cared for in some way. You won't be performing very complex tasks but you will be able to watch and learn from those with the responsibility of managing the situation, and you will see the caring skills of professionals being demonstrated. Your confidence and communication skills will develop and this will help you a lot at college when studying Health and Social Care.